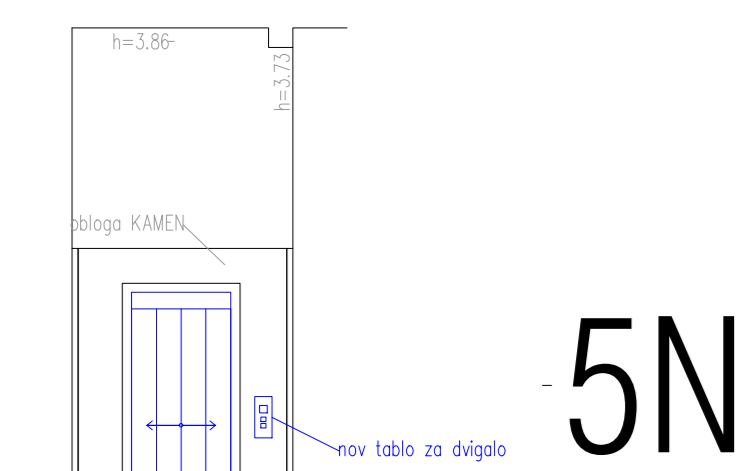
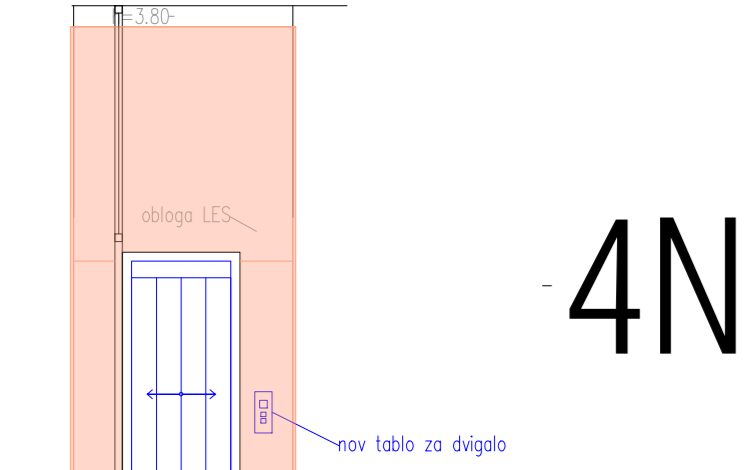


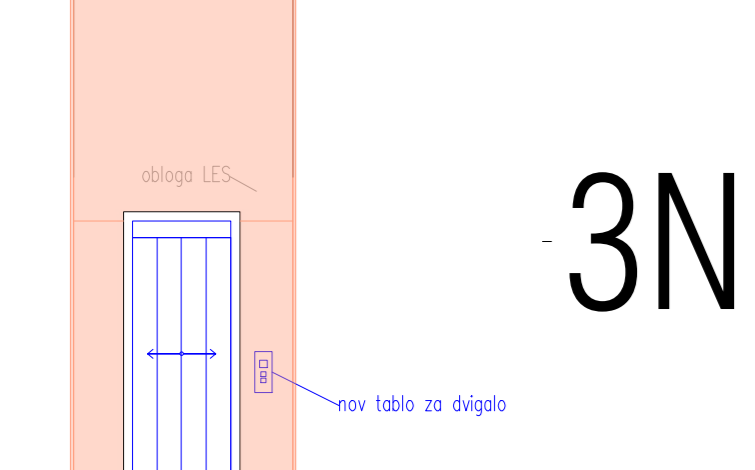
STROJNICA 6N



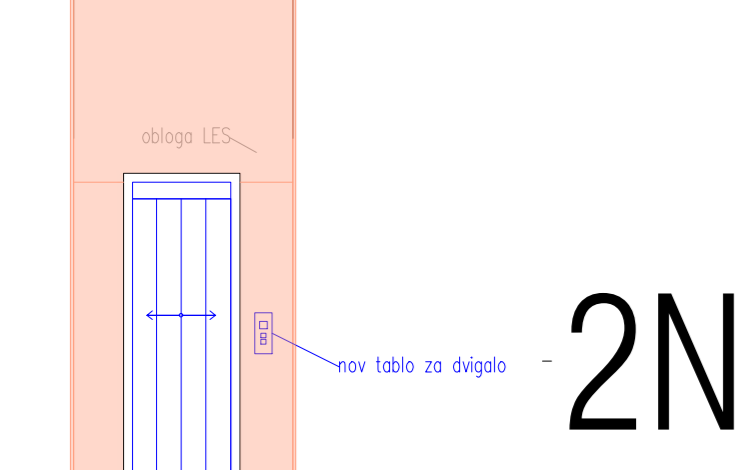
5N



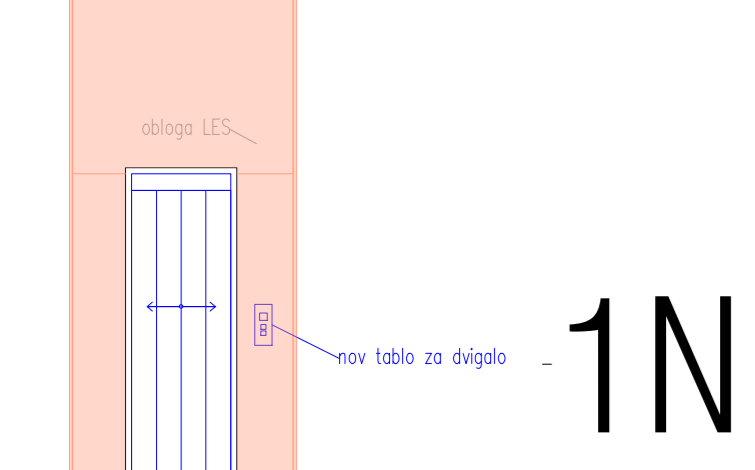
4N



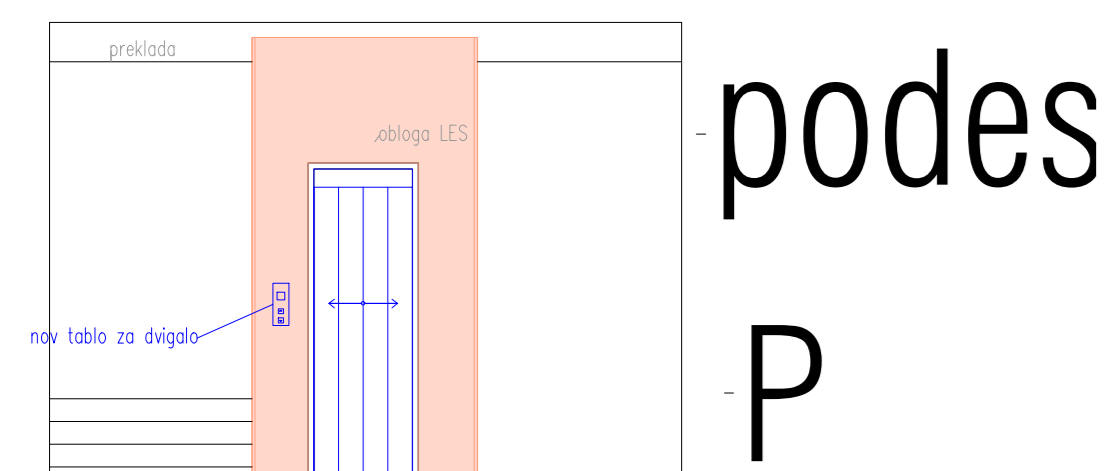
3N



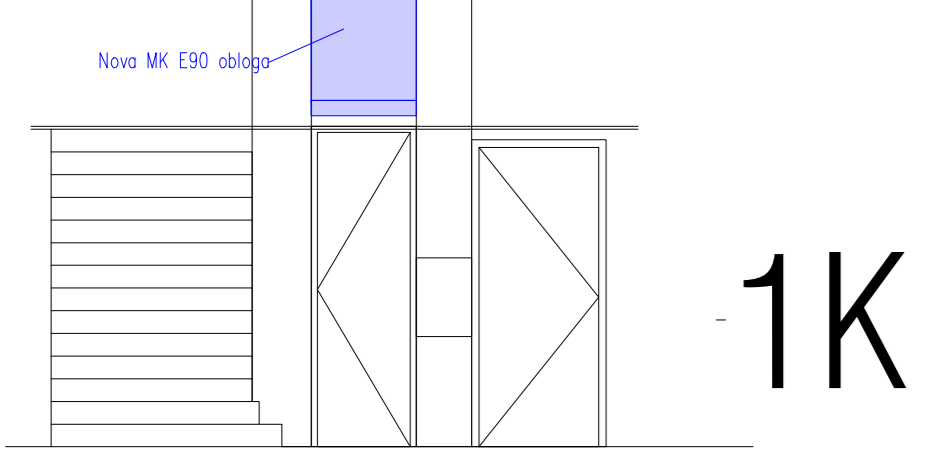
2N



1N

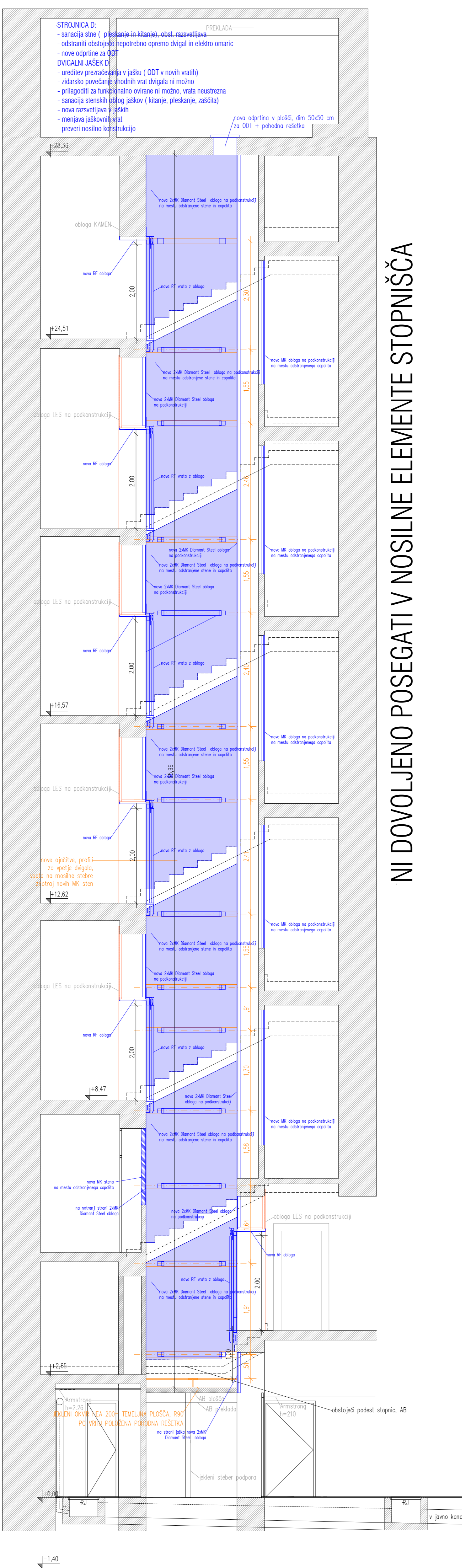


podes P

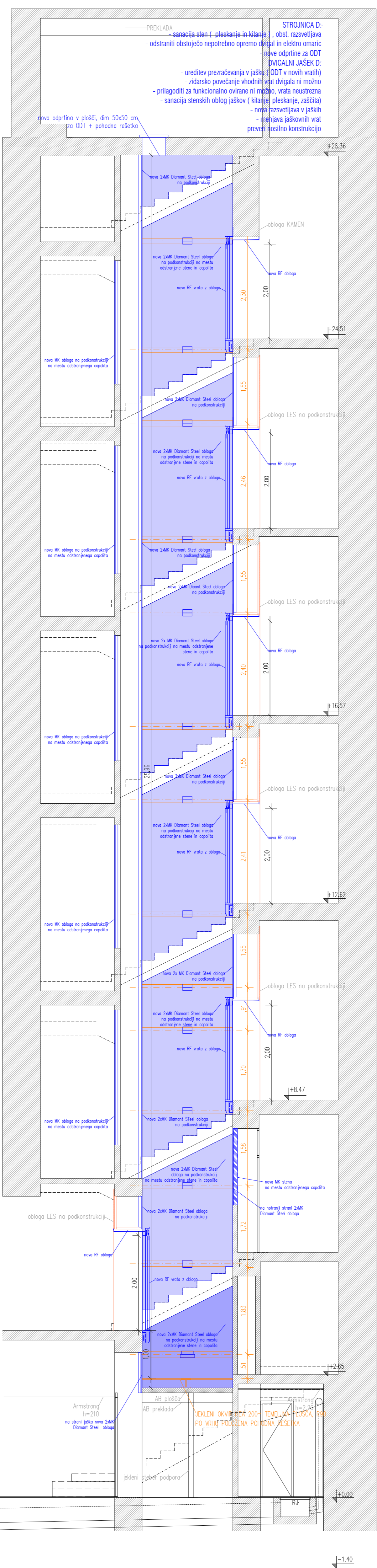


1K

prerez A-A skozi dvigalni jašek D



prerez B-B skozi dvigalni jašek D



NI DOVOLJENO POSEGATI V NOSILNE ELEMENTE STOPNIŠČA

NI DOVOLJENO POSEGATI V NOSILNE ELEMENTE STOPNIŠČA

Pred vgradnjo jeklenih ojačitev preveriti pozicije vpenjanja izbranega dvigala! Prilagoditi!

6N
strojnica

5N

4N

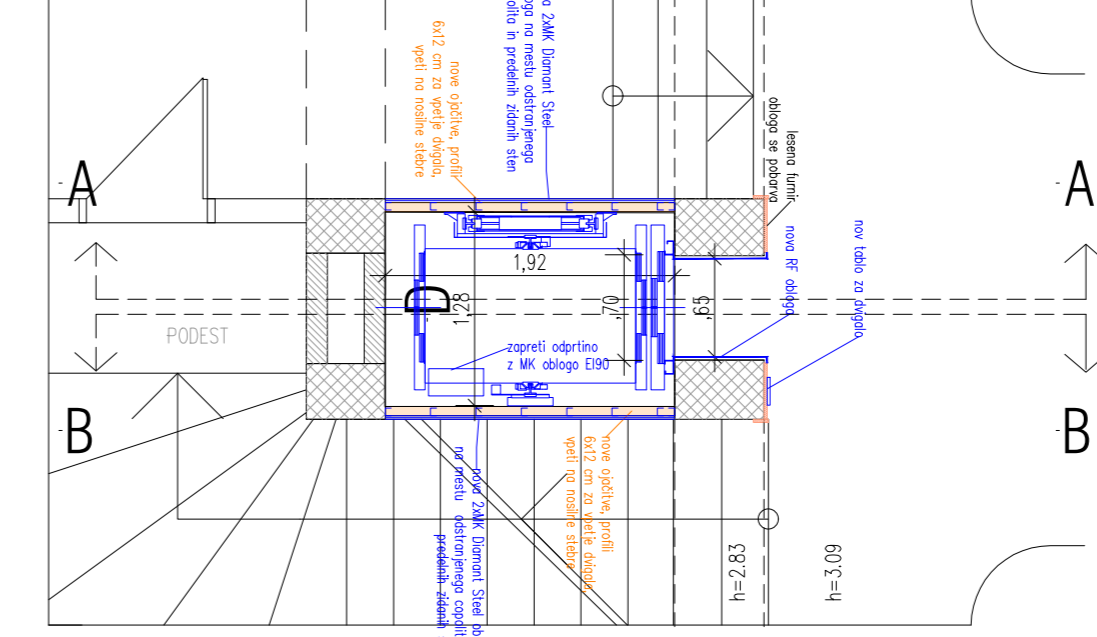
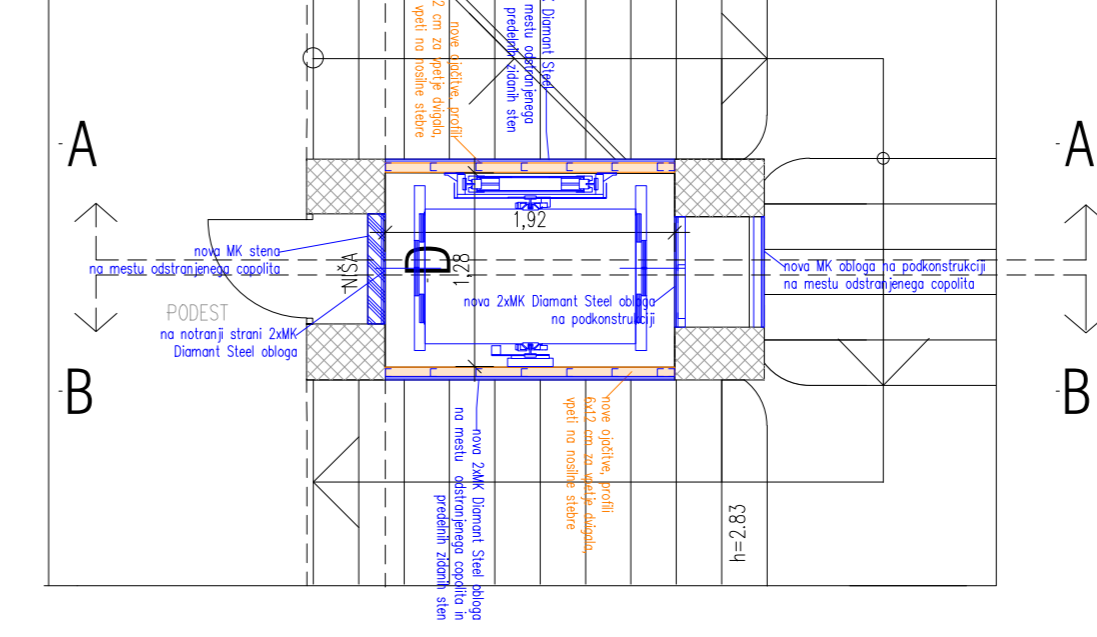
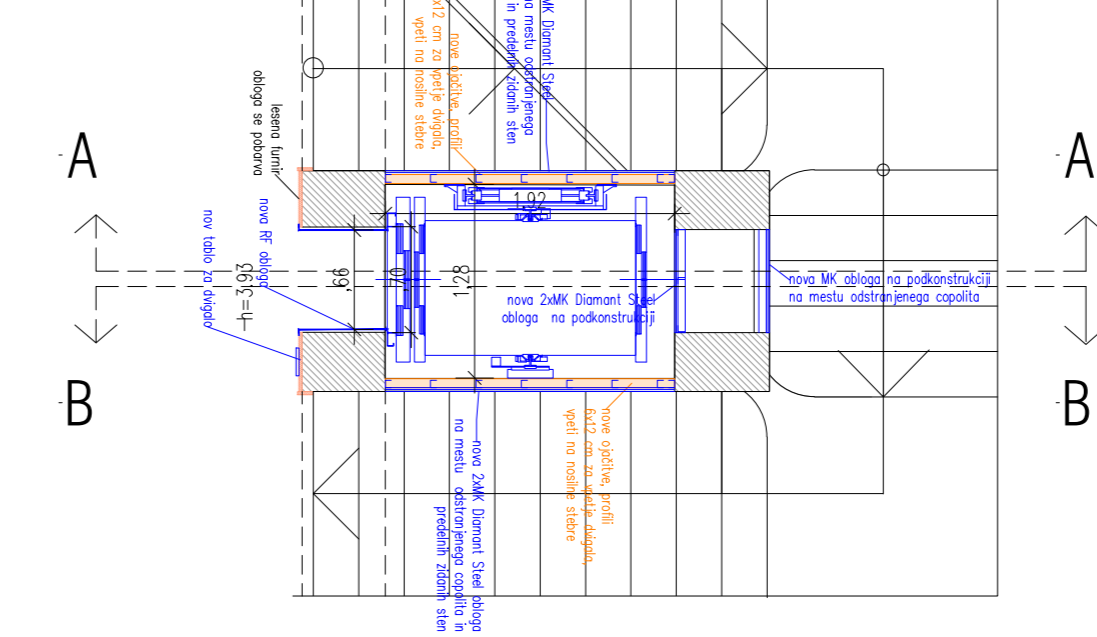
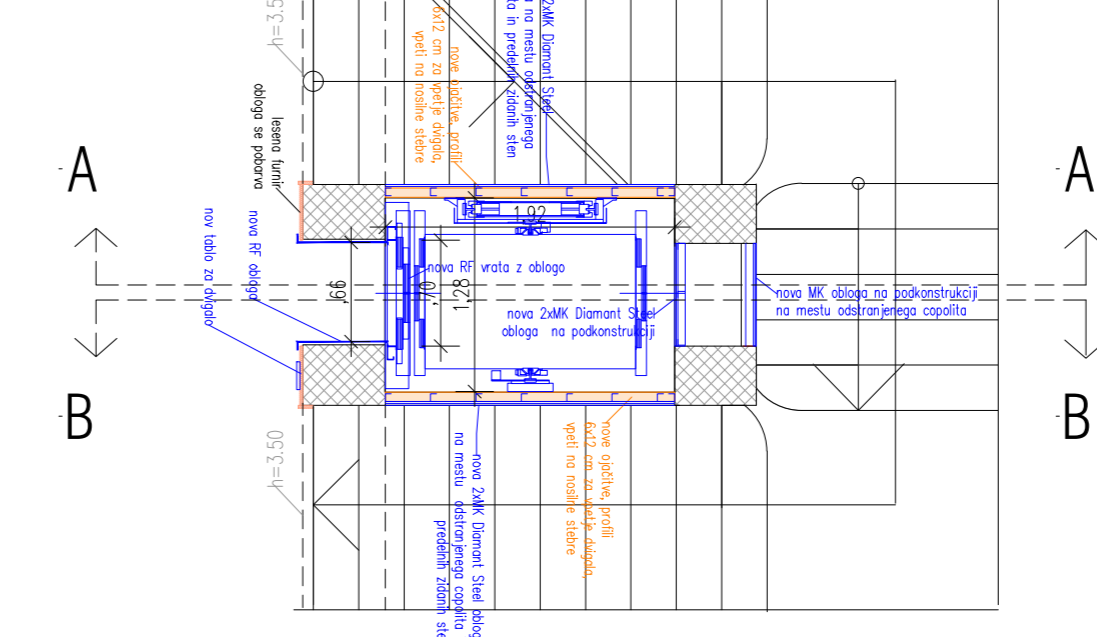
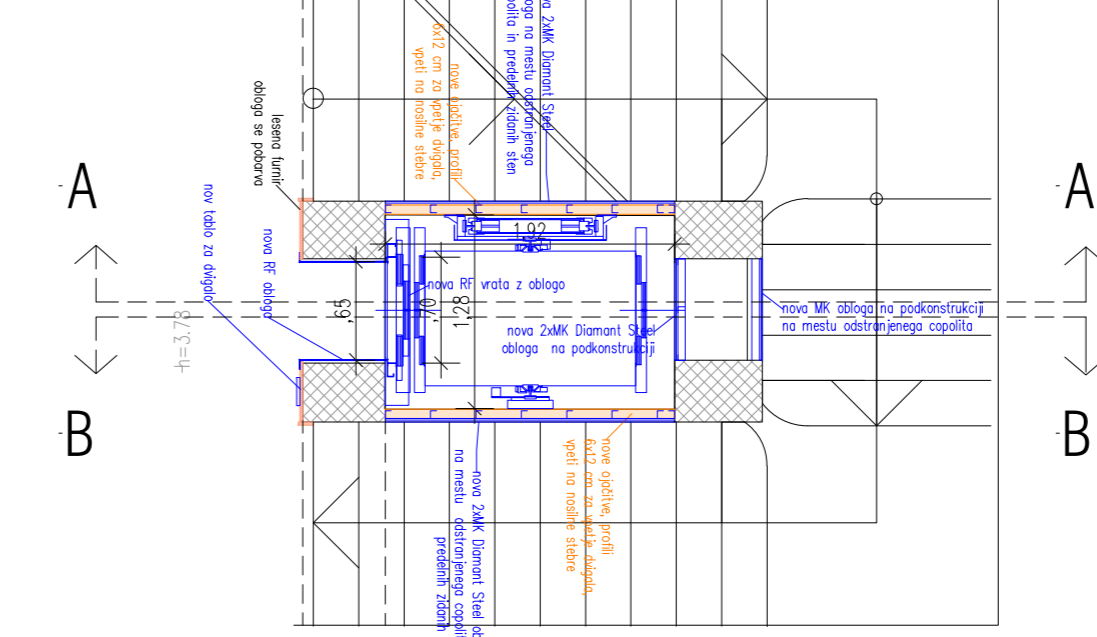
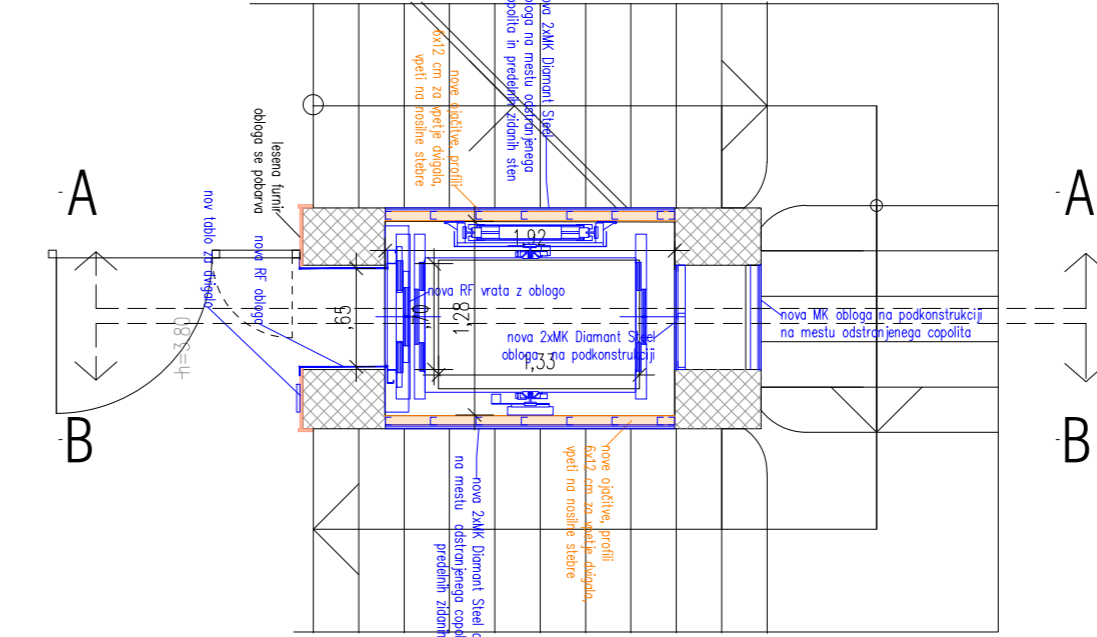
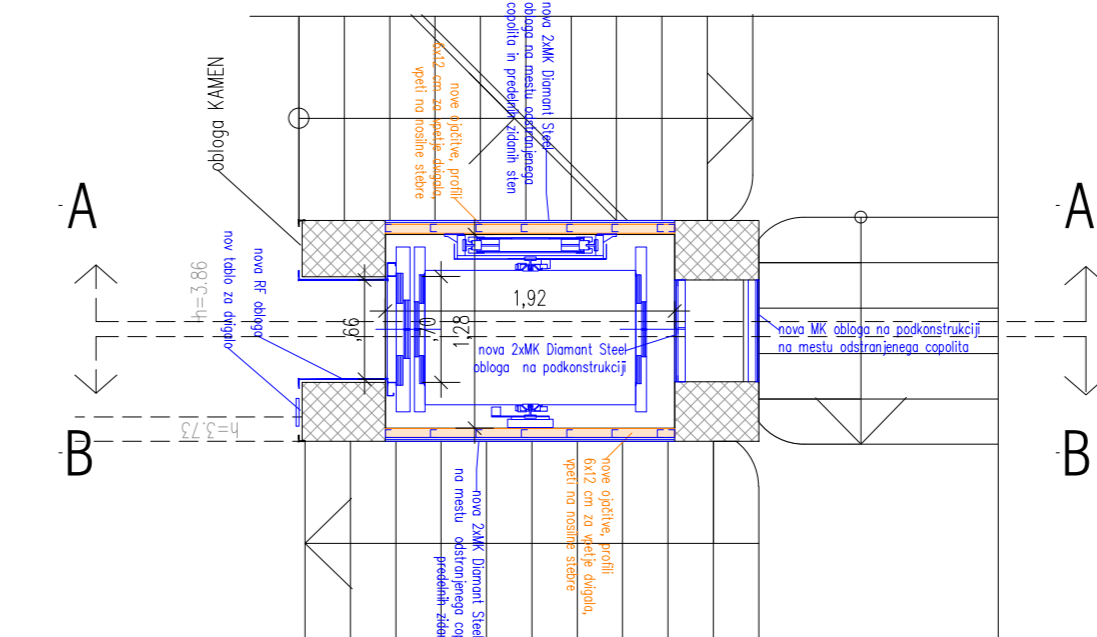
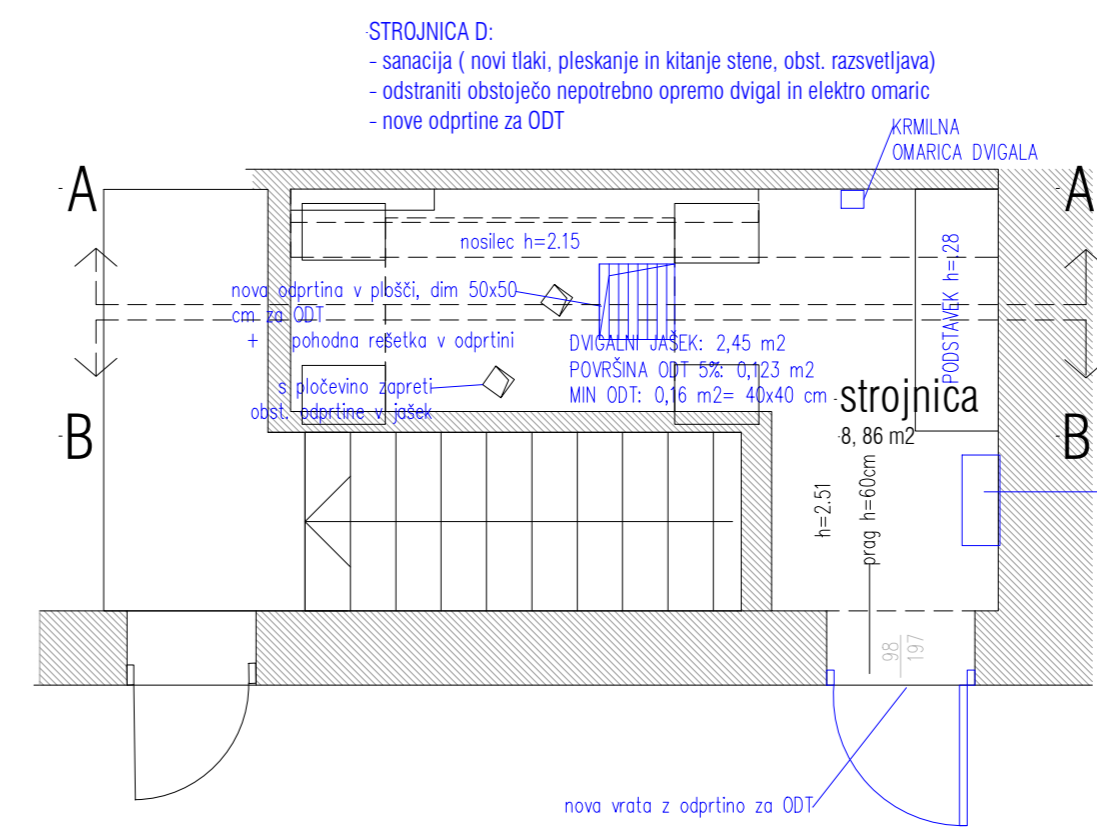
3N

2N

1N

podest

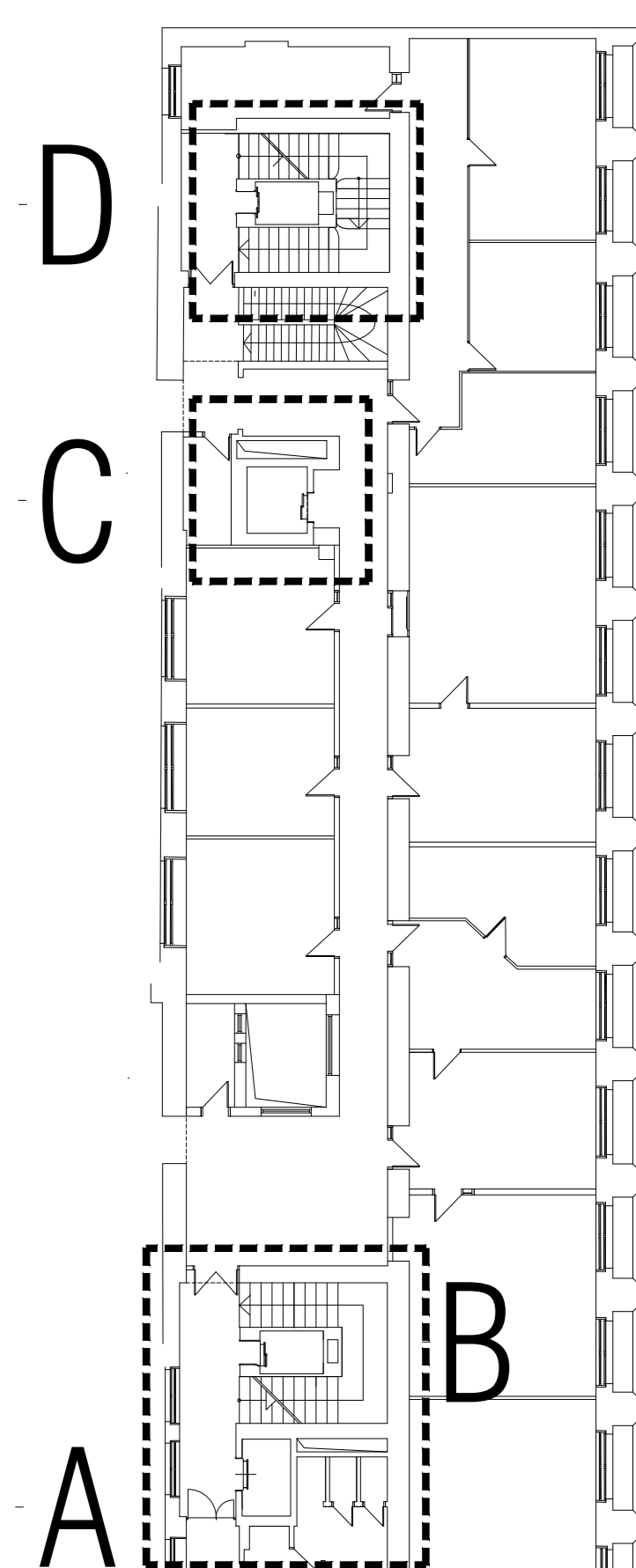
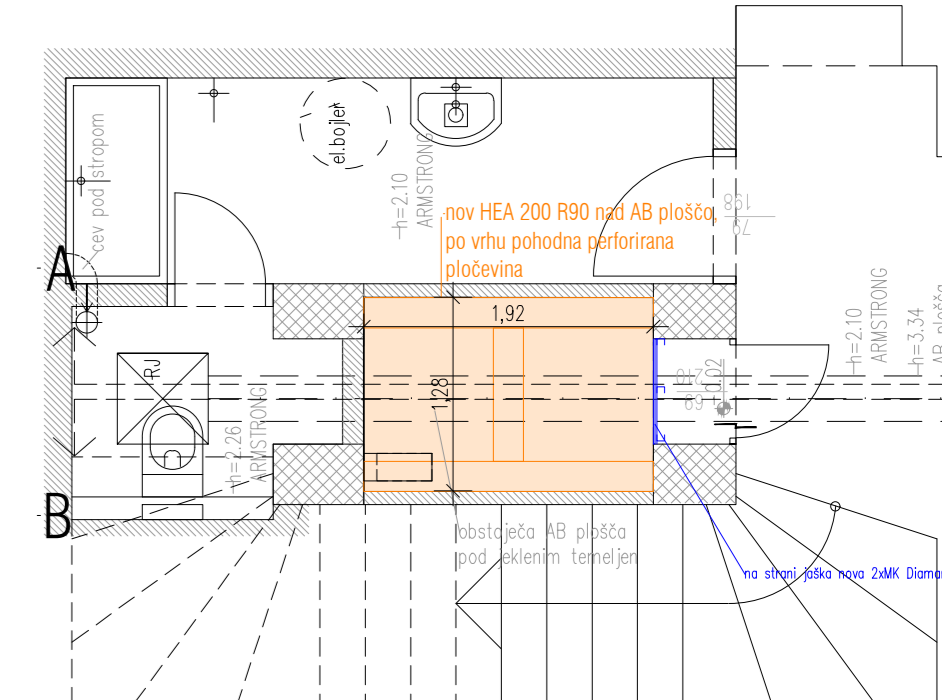
P



tlorisi jašek D

zidane stene
nearmirani beton

1K



A B C D E

LEGENDA:
 ■ NOVI ELEMENTI
 ■ NOVI ELEMENTI S POŽARNO ZABOČTO
 ■ NOVI JEKLENI ELEMENTI

Investor: Banka Slovenije
 Slovenska cesta 33, 1105 Ljubljana

Projekt: Banka Slovenije - Zamenjava petih obstoječih vrstnih dvigalov
 NOVO PREREZ, TLORIS - JAŠEK D

Dizajnerska enota 234e
 1291 Škoflca
 NOVA JAVNA AGENCIJA
 SANKOJA ŠTEPARN, s.d.l.a.
 ul. Škofjeva 1116A

odgovorni projektant: SANKOJA ŠTEPARN, s.d.l.a.
 ul. Škofjeva 1116A

NAČRT ARHITEKTURE

Ime: PZI
 mesto: Ljubljana

datum: FEBRUAR 2025

št. 14